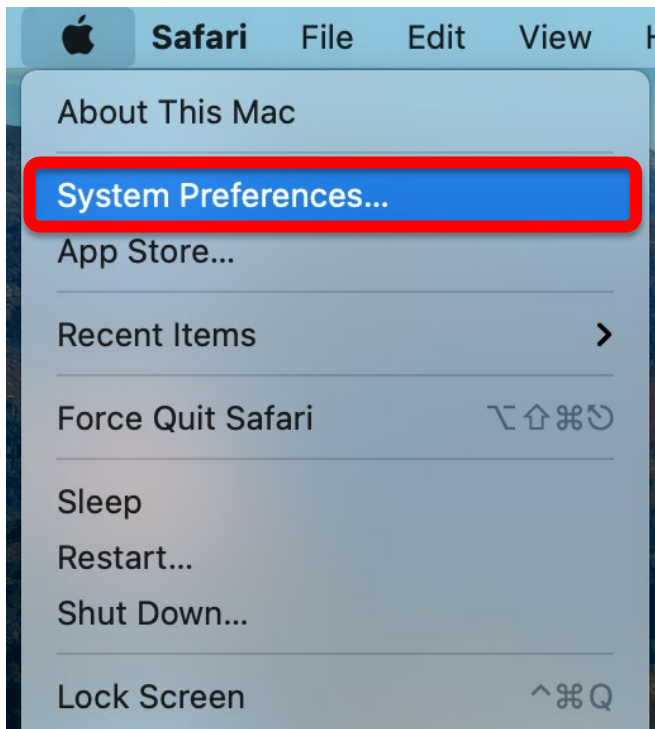
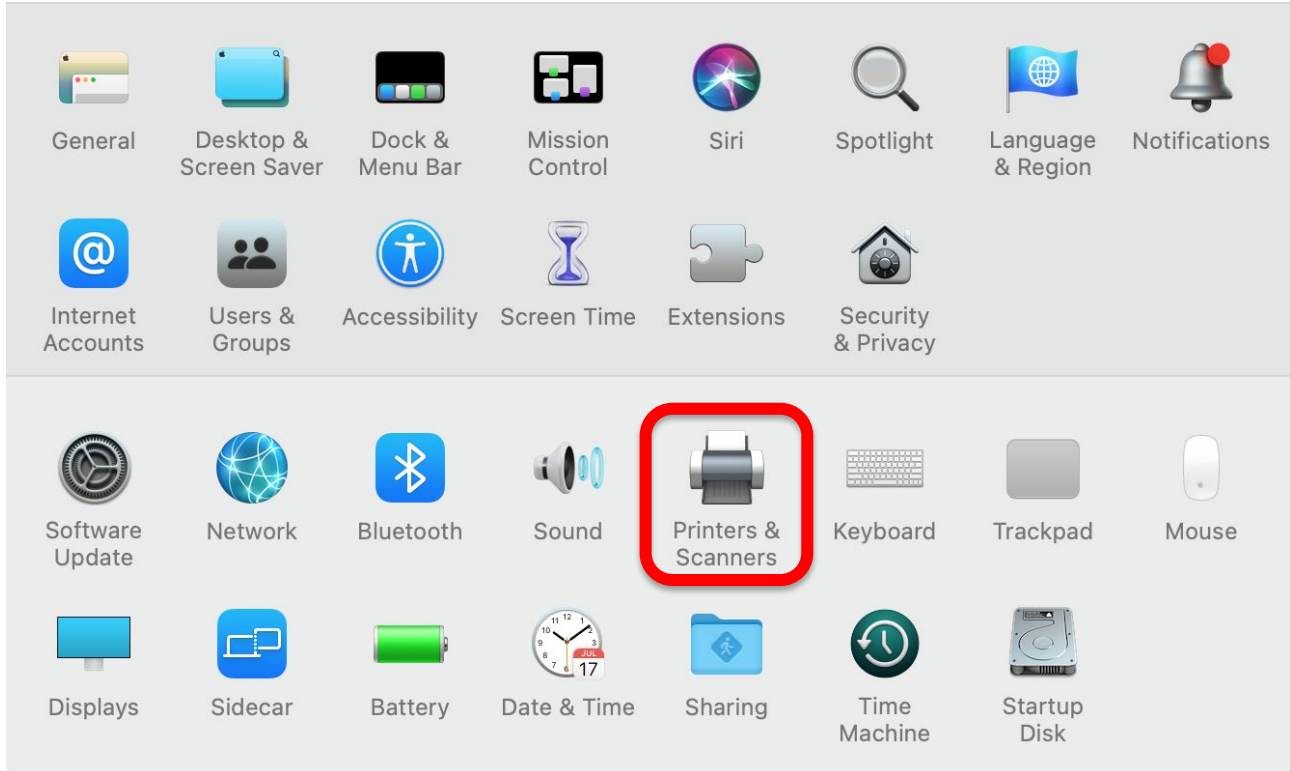


HOW TO ADD A PRINTER TO YOUR MAC

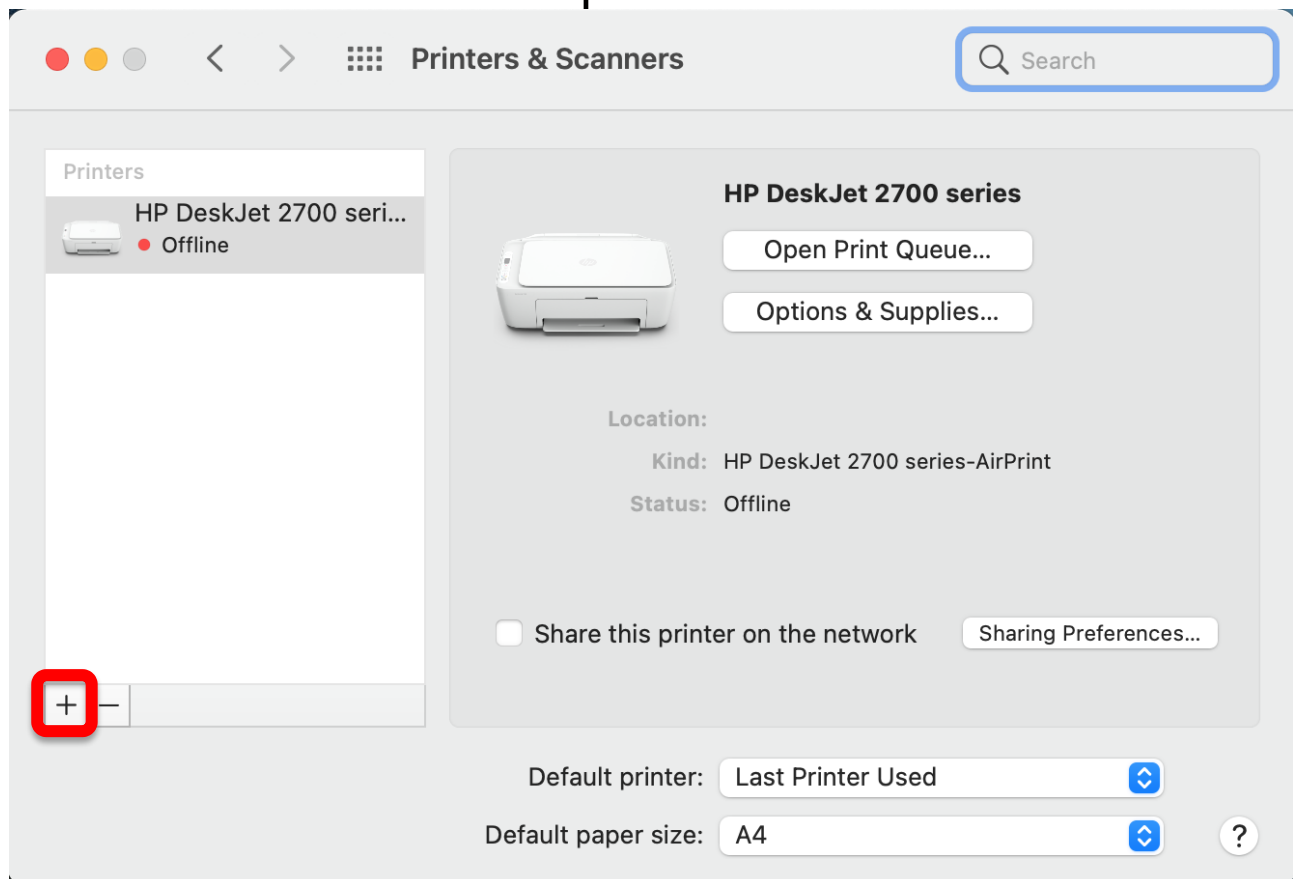
Click on the Apple menu  and select System Preferences




Select Printers & Scanners






Click on + to add a new printer




Click the IP button  and enter the **IP address** of the printer in the **Address** field. Select **Line Printer Daemon - LPD** as the **Protocol**, and then give the printer a memorable **Name**. Finally, select the **Generic PCL Printer** driver where it says **Use**.

Add Printer


Address:
Valid and complete host name or address.

Protocol: 

Queue:
Leave blank for default queue.

Name:

Location:

Use: 

Use this driver if printing doesn't work with the printer specific driver

Add

If you do have the correct driver for your printer you may install and use that. Please note that on some printers it won't work unless you select the Generic PCL Printer option.

If you use a generic driver, you may see an option such as the one below. Click OK to finish adding the printer.

