



TENNIS
FOR BRITAIN

2025

LTA GRASS COURT EVENTS MEDIA GUIDE



CONTENTS

TITLE PAGE

Meet the LTA Team	4
LTA Media Events Team	5
Tournament Media Managers	6
Tournament Media Managers (continued)	7
Broadcast Manager	8
LTA Grass court Events	9
Lexus Birmingham Open	10
WTA 500 - HSBC Championships Queens	11
Lexus Ilkley Open	12
ATP 500 - HSBC Championships Queens	13
Lexus Nottingham Open	14
Lexus Eastbourne Open	15
Lexus British Open Wheelchair Tennis Championships	16
Interviews	17
Interviews (continued)	18

CONTENTS

Photography	19
Filming	20
LTA News Service	21
Player Information Links	22
Fan Movement Regulations	23
Pride Days	24
Tennis Opened Up	25
SERVES	26
LTA Youth	27
Open Court	28
Sustainability	29
Women & Girls	30
LTA Tennis Foundation	31
Padel	32
LTA Support	33
LTA Performance	34
LTA Performance	35
LTA Partners	36
Useful LTA Links	37

MEET THE LTA TEAM

For information about the LTA and its policies and events, local participation initiatives or any LTA projects, British Players, requests or to speak to an LTA representative



JOHN DOLAN
LTA HEAD OF MEDIA
+44 7958 302 416



AMY FLATMAN
LTA MEDIA MANAGER
+44 7753 428 641



JOSH DAWSON
LTA MEDIA OFFICER
+44 7872 805 257

LTA MEDIA EVENTS TEAM

The LTA works with the Emilia Group and its highly experienced team of Tournament Media Managers and Broadcast Managers across all of its grass court tournaments. Contact the LTA media events team for accreditation, access onsite, requests to speak to the Tournament Director or Grounds team during the tournament, press conferences or interview timings or any other event-specific information.

To contact the LTA Media Events Team at any time, please email: LTAMediaEvents@LTA.org.uk or LTABroadcastOps@lta.org.uk



FAYE ANDREWS

LTA Media Events Lead for the Emilia Group and Tournament Media Lead for the WTA 500 at the HSBC Championships
+44 7788 921 066



ELEANOR PRESTON

LTA Media Events Lead for the Emilia Group, Tournament Media Lead for the ATP 500 at the HSBC Championships, Tournament Media Manager for the Lexus Eastbourne Open
+44 7967 562 040

TOURNAMENT MEDIA MANAGERS



NEIL ROBINSON

**Tournament Media Manager Lexus
Birmingham Open**

Telephone Number: +44 7930 576344

For emails regarding Birmingham
LTAMediaBirmingham@LTA.org.uk



MOHAMUD AHMED

**Tournament Media Manager Lexus
Ilkley Open**

Telephone Number: +44 7307 870542

For emails regarding Ilkley
LTAMediaIlkley@LTA.org.uk



EMILY BEVAN

**Tournament Media Manager Lexus
Nottingham Open**

Telephone number: +44 7401 14246

For emails regarding Nottingham:
LTAMediaNottingham@LTA.org.uk

TOURNAMENT MEDIA MANAGERS



CLAIRE GREY

**Tournament Media Manager Lexus Eastbourne Open,
WTA 500 HSBC Championships, ATP 500 HSBC
Championships**

Telephone Number: +44 7720 869714

For emails regarding Eastbourne
LTAMediaEastbourne@LTA.org.uk

For emails regarding Queens
LTAMediaQueens@LTA.org.uk



SANDRA NEL-KURMANN

**Tournament Media Manager WTA 500
HSBC Championships and ATP 500
HSBC Championships**

Telephone number: +1 (617) 680 1140

For emails regarding Queens
LTAMediaQueens@LTA.org.uk

BROADCAST MANAGER

There to support rights-holding and host broadcast partners onsite at the HSBC Championships

KEVIN CONNER



**Broadcast Manager – onsite at
HSBC Championships**

LTABroadcastOps@lta.org.uk
(please put QUEENS in subject
line)

+44 7867 392893

LTA GRASSCOURT EVENTS

TOURNAMENT DATES

Lexus Birmingham Open Qualifying: 1st – 2nd June
Main Draw: 2nd – 8th June

HSBC Championships, WTA 500 Qualifying: 7th – 8th June
Main Draw: 9th – 15th June

Lexus Ilkley Open Qualifying: 8th - 9th June
Main Draw: 9th – 15th June

HSBC Championships, ATP 500 Qualifying: 14th - 15th June
Main Draw: 16th – 22nd June

Lexus Nottingham Open Qualifying: 14th - 15th June
Main Draw: 16th – 22nd June

Lexus Eastbourne Open Qualifying: 21st – 22nd June
Main Draw: 23rd – 28th June

Lexus British Open Main Draw: 1st – 4th July

LEXUS BIRMINGHAM OPEN

The Lexus Birmingham Open marks the start of the 2025 grass court season, and for the first time will host both men's and women's draws. As a women's only event, it has been won by a host of legendary players, from Martina Navratilova and Billie Jean King to Ash Barty.

Venue: Edgbaston Priory Club

First held: 1982

Tournament Level:

Women: WTA 125

Men: ATP Challenger 125

Draw: 32 singles; 16 doubles

Prizemoney: £210,818 or \$267,082 (total financial commitment)

2024 Champion: Yulia Putintseva (KAZ)

Honour Roll: [Lexus Birmingham Open roll of honour \(lta.org.uk\)](https://lta.org.uk/tournaments/birmingham/roll-of-honour)

Tournament Website: [Lexus Birmingham Open Tennis Tournament Edgbaston | LTA](https://lta.org.uk/tournaments/birmingham)

Tournament Director: Kirsty Thomson

ATP Supervisor: Carl Baldwin

WTA Supervisor: Chen Shu

ATP/WTA Referee: Kath Lovell

Tournament Media Manager:

Neil Robinson

+44 7930 576344

LTAMediaBirmingham@LTA.org.uk

Pre-event/accreditation enquiries – LTAMediaEvents@lta.org.uk



HSBC CHAMPIONSHIPS – WTA 500

One of the most prestigious and celebrated grass court tournaments in the world, the HSBC Championships will for the first time in over 50 years feature a women's event, bringing the world's best female players to the grass courts of West London.

Venue: The Queen's Club

First held: 1884, but ATP Tour-only event 1977-2024.

Tournament Level: WTA Tour 500

Draw: 32 singles; 16 doubles

Prizemoney: €2,411,390 (total financial commitment €2,255,655)

Last Champion: Olga Morozova (Soviet Union) (1973)

Honour Roll: [HSBC Championships Tennis Tournament History \(lta.org.uk\)](https://www.lta.org.uk/tournaments/hsbc-championships-tennis-tournament-history)

Tournament Website: [HSBC Championships | Queen's Club](https://www.hsbcchampionships.com/)

[Championships | LTA](https://www.lta.org.uk/tournaments/hsbc-championships)

Tournament Director: Laura Robson

WTA Supervisor: Clare Wood

Tournament Media Managers:

Faye Andrews

+447788921066

Claire Gray

+447720 869714

Sandra Nel-Kurmann

+1 (617) 680 1140

LTAMediaQueens@LTA.org.uk

LTA Broadcast Manager:

Kevin Conner

+44 7867 392893

LTABroadcastOps@lta.org.uk - use QUEENS in the subject line

Pre-event/accreditation enquiries – LTAMediaEvents@lta.org.uk



LEXUS ILKLEY OPEN

This tournament has been described as the most picturesque tennis events in the world, thanks to being played with a backdrop provided by the beautiful Yorkshire landscape, including the famous Ilkley Moor.

Venue: Ilkley Lawn Tennis & Squash Club

Tournament Level

Women: WTA 125

Men: ATP Challenger 125

Draw:

Women: 32 singles; 16 doubles

Men: 32 singles; 16 doubles

Prizemoney:

Women: \$100,000

Men: €148,625

2024 Singles Champions:

Women: Rebecca Marino (CAN)

Men: David Goffin (BEL)

Tournament Website: [Lexus Ilkley Open Tennis Tournament Event Guide \(lta.org.uk\)](https://lta.org.uk)

Tournament Director: Rik Smith

WTA Supervisor: Kerrilyn Cramer

ATP Supervisors: Stephane Cretois, Anne Bees

WTA/ATP Referee: Lucy Davies

Tournament Media Manager (event time only):

Mohamud Ahmed

+44 7307 870542

LTAMediaIlkley@LTA.org.uk

Pre-event/accreditation enquiries – LTAMediaEvents@lta.org.uk



HSBC CHAMPIONSHIPS – ATP 500

One of the most prestigious and celebrated grass court tournaments in the world, the cinch Championships has a rich history and glittering list of former champions. Many of the men to have lifted the trophy at Queen's have gone on to do the same at Wimbledon.

Venue: The Queen's Club

First held: 1884, but ATP Tour-only event 1977-2024.

Tournament Level: ATP Tour 500

Draw: 32 singles; 16 doubles

Prizemoney: €2,411,390 (total financial commitment €2,255,655)

2024 Champion: Tommy Paul (USA)

Honour Roll: [HSBC Championships Tennis Tournament History \(lta.org.uk\)](#)

Tournament Website: [HSBC Championships | Queen's Club Championships | LTA](#)

Tournament Director: Jamie Murray

ATP Supervisors: Cedric Mourier and Gerry Armstrong

Tournament Media Managers:

Eleanor Preston

+44 7967 562040

Claire Gray

+44 7720 869714

Sandra Nel-Kurmann

+1 (617) 680 1140

LTAmediaQueens@LTA.org.uk

LTA Broadcast Manager:

Kevin Conner

+44 7867 392893

LTABroadcastOps@lta.org.uk - use QUEENS in the subject line

Pre-event/accreditation enquiries – LTAMediaEvents@lta.org.uk



LEXUS NOTTINGHAM OPEN

The impressive Lexus Nottingham Tennis Centre has hosted world class tennis events since 1970 and is the first of the LTA's four major WTA and ATP events to be played on grass each season.

Venue: Lexus Nottingham Tennis Centre

First held: 1970

Tournament Level:

Women: WTA 250

Men: ATP Challenger 125

Draw:

Women: 32 singles; 16 doubles

Men: 32 singles; 16 doubles

Prizemoney:

Women: \$267,082

Men: €148,625

2024 Singles Champions:

Women: Katie Boulter (GBR)

Men: Jacob Fearnley (GBR)

Honour Roll: [Lexus Nottingham Open roll of honour \(lta.org.uk\)](https://lta.org.uk/lexus-nottingham-open-roll-of-honour)

Tournament Website: [Lexus Nottingham Open Tennis Tournament](https://lta.org.uk/lexus-nottingham-open-tennis-tournament)

Tournament Director: Amy Hitchinson

WTA Supervisor: Chen Shu

ATP Supervisor: Ahmed Abdel-Azim

WTA/ATP Referee: Chris Mann

Tournament Media Manager (event time only):

Emily Bevan

+44 7401 142426

LTAMediaNottingham@LTA.org.uk

Pre-event/accreditation enquiries – LTAMediaEvents@lta.org.uk



LEXUS EASTBOURNE OPEN

The unique seaside grass court event is as famous for its seagulls and sunshine for attracting consistently strong player fields and hosting world class grass court matches on the pristine lawns of Devonshire Park.

Venue: Devonshire Park

First held: 1974 as a WTA event with the men joining in 2009.

Tournament Level:

Women: WTA 250

Men: ATP 250

Women - 32 singles/16 doubles

Men - 28 singles/16 doubles

Prizemoney:

Women - \$922,573

Men – €740,160 (Total Financial Commitment €812,705)

2024 Champions:

Women – Daria Kasatkina (AUS)

Men – Taylor Fritz (USA)

Honour Roll: [Lexus Eastbourne Open roll of honour \(lta.org.uk\)](https://lta.org.uk/lexus-eastbourne-open-roll-of-honour)

Tournament Website: [Lexus Eastbourne Open Tennis Tournament | LTA](https://lta.org.uk/lexus-eastbourne-open-tennis-tournament)

Tournament Director: Rebecca James

WTA Supervisor: Mariana Alves

ATP Supervisor: Gerry Armstrong

Tournament Referee: Tom Kinloch

Tournament Media Managers:

Eleanor Preston

+44 7967 562040

Claire Gray

+44 7720 869714

LTAMediaEastbourne@LTA.org.uk

Pre-event/accreditation enquiries – LTAMediaEvents@lta.org.uk



LEXUS BRITISH OPEN WHEELCHAIR TENNIS CHAMPIONSHIPS

The Lexus British Open Roehampton will see top wheelchair athletes and junior players take to the grass courts at the Wimbledon Qualifying and Community Sports Centre, Roehampton for the first time.

Venue: Wimbledon Qualifying and Community Sports Centre, Roehampton.

First held: 1990 at Bishops Park in Fulham, London before moving to Sheffield in 1992. In 1993, the British Open moved to the Nottingham Tennis Centre.

2024 Champions:

Women – Yui Kamiji

Men – Gustavo Fernandez

Quad – Niels Vink

Junior Boys – Rafael Jodar

Junior Girls – Teodora Kostovic

Honour Roll: [History \(lta.org.uk\)](https://www.lta.org.uk/history)

Tournament Website: [British Open Wheelchair Tennis Championships \(lta.org.uk\)](https://www.lta.org.uk/britishopen)

Tournament Director: Kirsty Thomson

Tournament Media Manager:

Taylor Toney-Green

+447710 454754

LTAMediaBritishOpen@LTA.org.uk

Pre-event/accreditation enquiries – LTAMediaEvents@lta.org.uk



INTERVIEWS

All interview requests for players need to be directed via the ATP/WTa Communications Manager or the via LTA Tournament Media Manager

Players and coaches: If you would like to speak to a player or a coach please contact the ATP or WTA Communications manager assigned to the tournament. If the player is competing that day, please ensure that you get your request in on the same day, before the end of the match. Players will not be brought to press automatically unless requested.

To speak to WTA or ATP Officials or staff: Please contact the ATP or WTA Communications manager assigned to your tournament. The Tournament Media Manager can introduce you if needed.
All post-match requests must be sent before the end of the match

To speak to LTA senior staff or LTA coaches: Please contact media@lta.org.uk or speak to the LTA Media team members working onsite at each tournament.

To speak to the Tournament Director, Grounds Team or other event staff: Please contact the Tournament Media Manager assigned to the tournament you are covering.

Please do not approach players, coaches, LTA senior staff, Tournament team or officials directly for interviews. Taking photos or video of players or player areas without prior permission is also against tournament rules.

INTERVIEWS

Interview Request Contacts:

Lexus Birmingham Open

To speak to female players, email: XX at the WTA on

To speak to male players, email: XX at the ATP on

HSBC Championships

To speak to female players during the WTA 500 event, email:

To speak to male players during the ATP 500 event, email:

Lexus Ilkley Open

To speak to female players, email:

To speak to male players, email:

Lexus Nottingham Open

To speak to female players, email:

To speak to male players, email:

Lexus Eastbourne Open

To speak to female players, email:

To speak to male players, email:

PHOTOGRAPHY

All photographers are requested to wear a bib when working on the main show courts and to remain in designated photo areas unless by prior arrangement. Bibs can be collected from the Tournament Media Centre and must be signed in and out and returned at the end of each day.

If you wish to access other areas, for example to gain a higher position or panoramic view of the court, please let the Tournament Media Manager know and they will facilitate.

Please avoid walking onto the court at any time (unless directed during ceremonies by the Tournament Media Manager) and be conscious of obstructing views of spectators sitting courtside.

For busy matches, limits may be placed on the number of places in photography pits. Priority will be given to international agencies and members of the International Tennis Photographers Association. This process will be managed by the LTA Tournament Media Manager.

FILMING

FILMING GUIDELINES FOR 2025 LTA SUMMER GRASS COURT TOURNAMENTS

RIGHTSHOLDERS, OFFICIAL CONTENT TEAMS*, NON-RIGHTSHOLDERS, EXTERNAL SOCIAL MEDIA TEAMS CAN:

- Request pre-event interviews - rightsholders/official content teams have priority
- Film practice from designated positions on or by practice courts - please notify Broadcast Manager when you want to film practice
- Film Press Conferences (a maximum of three minutes can be shared online within the first 24 hours of the press conference taking place)
 - Film around the grounds - spectators, retail areas etc
- Request post-match interviews to happen after the press conference - make requests to ATP/WTa Communications Manager, interviews are not guaranteed
- Request an interview from someone from the tournament or LTA - make request to Tournament Media Manager or LTA Media team member
 - Watch from the Media Seats - no filming allowed
- Record selfie videos only when the court is empty - not while players are on court

ONLY RIGHTSHOLDERS AND OFFICIAL CONTENT TEAMS* CAN:

- Film courtside during matches - but only in a designated ENG position. *Please request position from Broadcast Manager - ARMBAND required*
- Request post-match interviews to happen either on court (after the MC's interview) or courtside or in the flash zone (if available) - *request through ATP/WTa Media*

IMPORTANT NOTES:

- NON-RIGHTSHOLDERS (including TV News crews and external content/social media teams) are NOT PERMITTED to film match action
 - Host broadcast cameras ALWAYS have priority in position and line of shot
 - Only film from designated ENG positions when courtside
 - Always wear your armband

ARMBANDS REQUIRED - Please request from Broadcast Manager or Tournament Media Manager

BLUE - Host broadcast

RED - Rightsholder

GREEN - Official Content (Official Content Teams = ATP/WTa/LTA content teams)

LTA NEWS SERVICE

The LTA News Service is a way for media covering our grass court events to access information, statistics and quotes quickly, easily and sustainably. It is an easy-to-use, secure online platform which will be updated through the day, containing:

- Up-to-date and accurate information from all our events
- Match notes and previews for British players' matches
 - Profiles of British players,
 - Flash quotes
- Results, orders of play, historical draws from all events
- And a daily news story from each tournament with useful stats and facts

In order to protect the work of media onsite, the flash quotes on the news service will either be taken from on-court interviews or be limited to one quote about the match, one quote looking ahead and a brief update on an injury (where relevant). ASAP Transcripts (from Queen's and Eastbourne only) will not be posted on the LTA News Service until the following morning.

The LTA News Service has been created following helpful discussions with and feedback from media covering our events and is being managed by Kevin Palmer, an experienced working journalist. The LTA News Service will replace the separate press releases from each event that we sent out in previous years and should therefore ease pressure on your email inboxes at what we know is a busy time of year. Instead, anyone on our media mailing list will receive a daily recap email with headlines from each event and links to more info.

The LTA News Service will be ready to use from Monday 2nd June. For those of you accredited, you will receive your own secure login details separately and this will be of use all the way through the grass court season concluding after the British Wheelchair Open. We very much welcome your feedback in input so that we can keep improving the platform and its content and tailor it to your needs. We do hope you find it useful in your coverage of our LTA events as we continually strive to improve our service to you.

PLAYER INFORMATION LINKS

Both the ATP and WTA produce daily match notes for ATP Tour and WTA Tour events as well as an edition of notes which serves as a tournament preview. Daily Media Notes will usually be available overnight prior to matches.

For rankings, to check a player's recent form or find player profiles and interviews, check the ATP, WTA and ITF websites:

Birmingham, Ilkley, Nottingham events:

Women: <https://www.wtatennis.com>

Men: <https://www.atptour.com/en/atp-challenger-tour>

HSBC Championships:

Men: <https://www.atptour.com>

Women: <https://www.wtatennis.com/>

Lexus Eastbourne Open:

Men: <https://www.atptour.com>

Women: <https://www.wtatennis.com>

ATP Media Notes - including archive notes - can be downloaded here:

<https://www.atptour.com/en/media/daily-media-notes>

WTA Media Notes - including archived notes - can be downloaded here:

<https://www.wtatennis.com/press-center>

Need information on British players?

<https://www.lta.org.uk/fan-zone/british-tennis-players/>

FAN MOVEMENT REGULATIONS

New for 2025 – the ATP and WTA are introducing a new approach to Free Fan Movement across all their tour events around the world. Along with all other events, the LTA's Grass Court events need to follow these tour rules.

Free Fan Movement gives spectators the freedom to enjoy the tennis with greater access in and out of certain areas of the stands while matches are being played.

Depending on where fans are sat, they will have either Restricted, Limited or Free movement during matches to enter and leave the stadium.

These regulations are subject to change depending on live feedback from players throughout the tournament, therefore fans should listen to the Stewards and follow their directions.

Every seat will have a coloured sticker on to help fans identify which zone they're in. There will also be signs and further information around the grounds on the day to explain what this means and when fans can move in and out of the stadium.



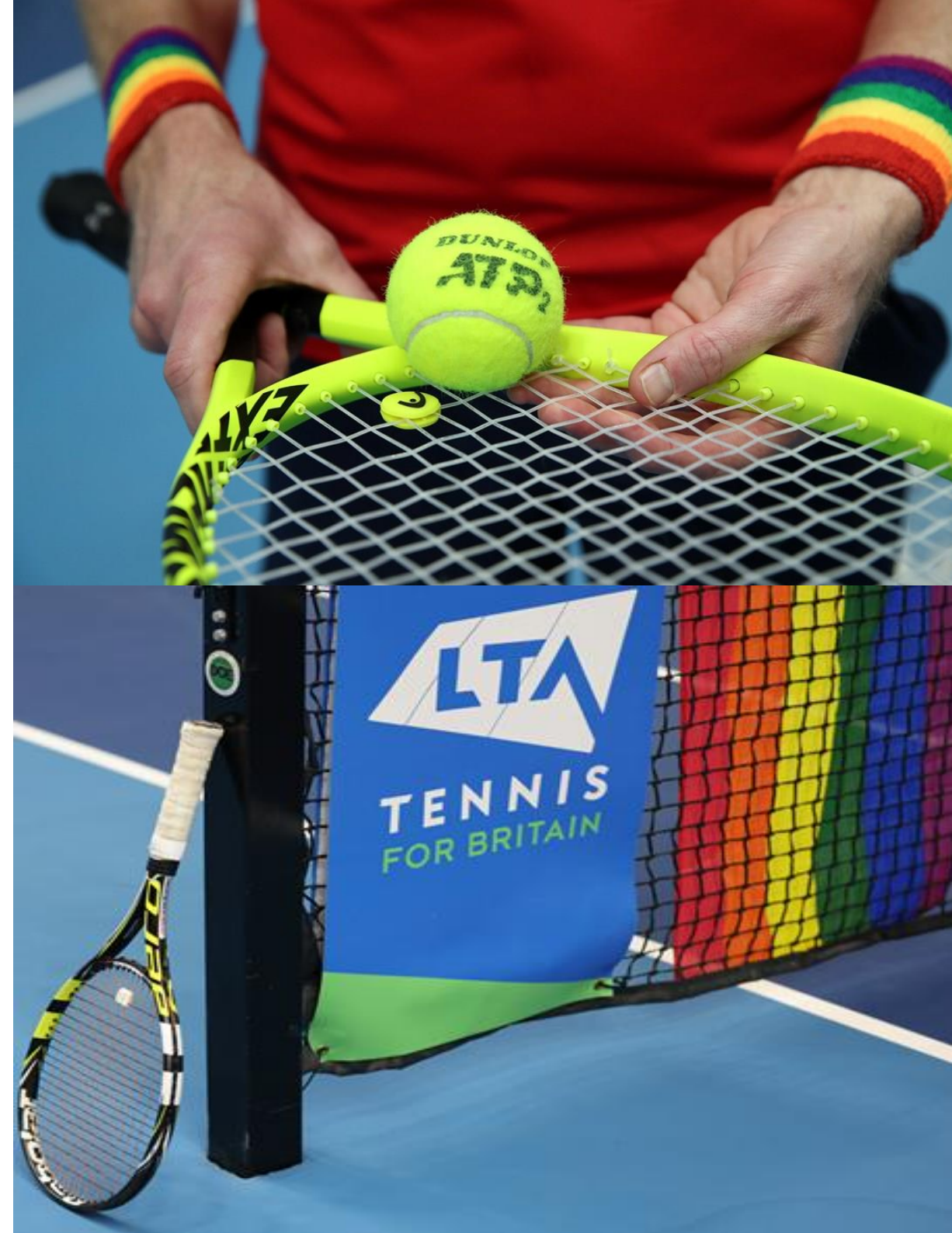
PRIDE DAYS

Having been a staple of LTA events since making their debut in 2022, **'Friday Pride Days'** will be a key component of the summer grass court tournaments once again this month.

With June marking Pride Month, tennis is eager to encourage all those who attend our major events to join in those celebrations.

Tennis has a proud record of leading the way on LGBTQ+ inclusion and advocacy and through a partnership with the Pride in Tennis organisation, Friday Pride Days will help to further build relations with LGBTQ+ communities across the country and show that tennis as a sport is a safe space for people in those communities.

As part of the days, on-court furniture will receive a glow-up while Pride and Progress flags will fly proudly above the stands of all major events.



ABOUT THE LTA AND WHAT WE'RE DOING TO PROMOTE AND GROW TENNIS IN THE UK

TENNIS OPENED UP

Our vision is 'Tennis opened up', and our mission is to grow tennis by making it relevant, accessible, welcoming and enjoyable. We're here to govern and develop tennis in Britain, from grassroots participation through to the professional game.

Tennis is an amazing sport. Anyone can play; whatever their motivation or ability, from all communities and backgrounds. At any age and for a whole lifetime, tennis provides physical, social and mental rewards both on and off the court.

We want tennis to be open to as many people as possible, across the whole of Britain. Volunteers, coaches, officials, clubs and venues all play an essential role in the future of our sport; without them, tennis can't exist. We're committed to providing them with the right investment and support, and celebrating their wonderful work. We want to engage with thousands of fans so that we can bring them closer to the sport, offering new ways for them to enjoy and get the most out of tennis.

We will continue to deliver a standout calendar of major tennis events; from Billie Jean King Cup and Davis Cup ties, to grass court tournaments. We want to take tennis to new areas, so as many people as possible can watch world-class tennis action.

We are here to help many more people pick up a racket, whether it's for the first time, or the first time in a while. We want to enable men and women of all ages and abilities to play more often, year round.



LTA SERVES

Taking tennis into the local community

The SERVES programme is the LTA's leading sport for development programme, which takes tennis into the heart of local communities to people who may have never picked up a racket or thought tennis was for them.

LTA SERVES venues are located across England, Scotland and Wales and tennis is delivered in a variety of venues including; Community Centres, Youth Clubs, Mosques, Gurdwaras, Mandirs, Church Halls, Housing Associations and others.

We encourage and engage young people aged 8 – 18 years to get active and involved in tennis – having fun with friends, keeping mentally and physically fit all while learning new skills and increasing their self-confidence. In turn this supports and empowers young people to develop both as an individual and in tennis learning life skills beyond the tennis court.

LTA SERVES Tennis Activators are from the communities that they deliver tennis in and are from a diversity of backgrounds. Volunteers, Leaders, Youth Workers and others (16+) are provided with training and skills required to become a Tennis Activator, enabling them to lead and facilitate tennis sessions confidently to the young people that attend.

Tennis is a sport that everyone can get involved in; we aim to encourage as many communities to participate in playing tennis. We offer opportunities for SERVES Venues to meet and play tennis together and access tennis provision outside of their own community venue.



LTA YOUTH

Getting more children and young people into tennis

LTA Youth is our flagship junior programme, bringing together all of our expertise and drive to help children get involved in tennis, whether they want to try it in school or want to push themselves in competition. It connects all tennis activity for juniors so that the offer looks and feels the same, whether a child is playing in a school, park or club, helping create a simple and clear route into tennis for players and their parents.

LTA Youth Schools is our programme to help more schools deliver more tennis to more children, designed to be as impactful as possible both for students and their teachers. The programme offers free teacher training, PE activities and content specifically created to develop traits like perseverance, resilience and respect which complement the PSHE curriculum, whilst helping to deal with the challenge of how to boost physical activity among children and young people. Thanks to the LTA Tennis Foundation, each school that completes training receives a £250 voucher, which can be used either for 10 hours of LTA accredited coaching or tennis equipment.

So far, our schools programme has had a major impact:

- 14,893 schools registered
- 38,264 registered teachers
- 27,750 teachers have completed training
- 9,355 schools have received a £250 voucher from the LTA Tennis Foundation

LTA Youth Schools is just one of several success stories from the wider LTA Youth programme.



OPEN COURT

Getting people with disabilities into tennis

Our Open Court Programme is a national scheme that actively promotes and delivers opportunities for disabled people to get involved in tennis and padel. Partnered with and jointly funded by [Sport England](#), the programme provides disability specific sessions for tennis and padel – including adaptations for learning disability, wheelchair, visually impaired and deaf. We're also expanding our programme into other long-term health conditions such as mental health and dementia.

The LTA works with tennis and padel venues across the country, putting on a range of activities to improve mental and physical health through increasing opportunities to play, socialise and compete with similar people in the sport.

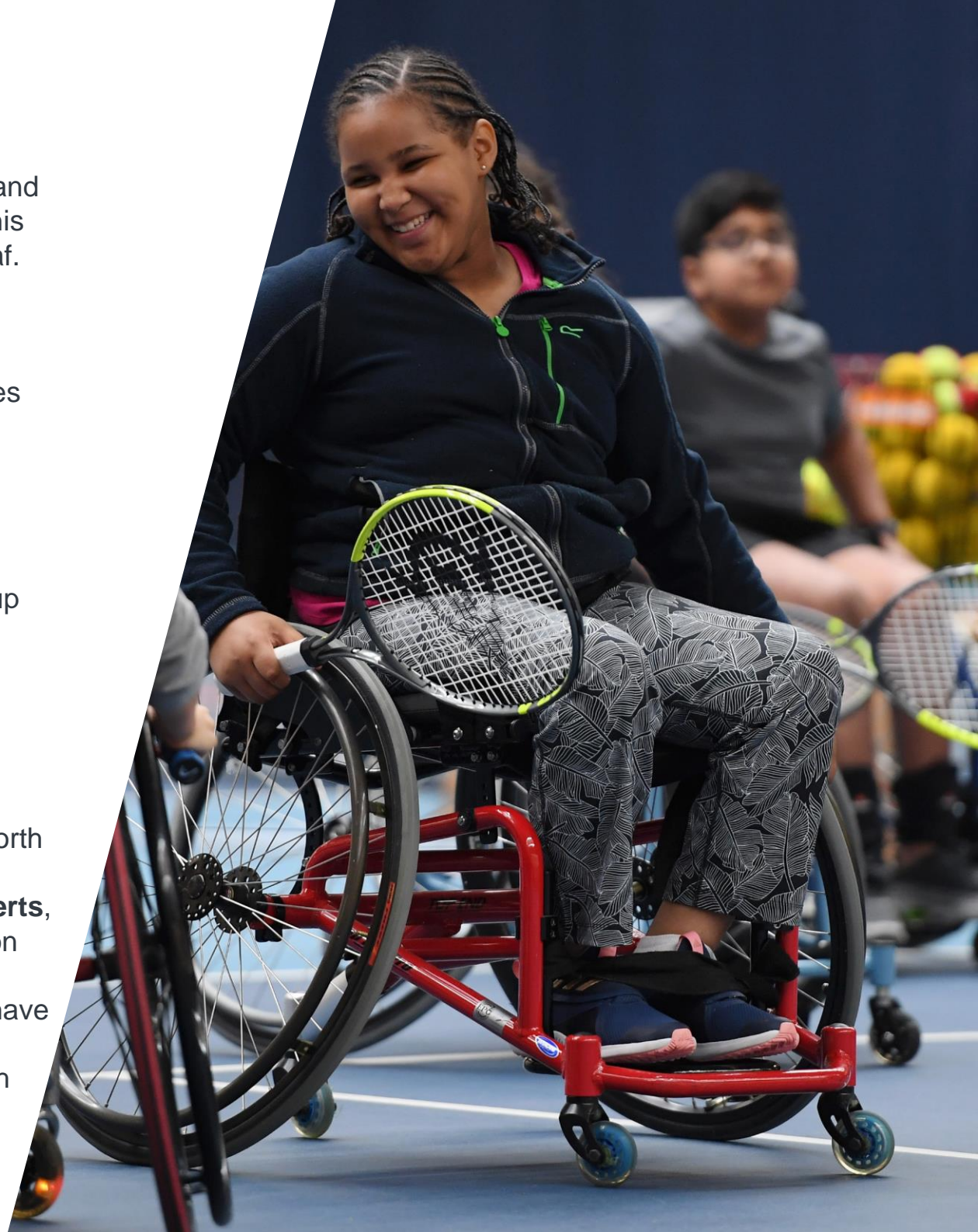
Who does it support?

We support people in clubs, parks, community and education as well as everyone involved in tennis and padel, including coaches with a similar interest and who share our vision to open up tennis to people from all backgrounds.

Our offer to tennis & padel venues

We've developed a package of equipment and support to enable venues to increase opportunities for disabled people through being a part of our Open Court programme. This includes:

- Provision of an **adaptive equipment bag** with rackets, balls, net and range of equipment (worth £350) to help make sessions flexible and fun.
- 'Flying visits' with your coaches, volunteers and venue staff by **disability development experts**, providing disability awareness training so that they may assess their accessibility and inclusion offer.
- Funding support** to cover start-up costs and get your activities up and running so that you have time to make them sustainable in the long term.
- Support with **marketing and communications**, enabling you to effectively communicate with your local disability community.
- Invitation to **networking** events.
- Access to our specialist [Disability Development Partners](#) as ongoing support to help overcome any barriers you may face in your quest to be more inclusive.



SUSTAINABILITY

To deliver the LTA's vision of Tennis Opened Up and ensure that tennis and the places it is played are accessible and thriving for generations to come, it's vital that everyone rallies together to protect the sport and the places we play.

This is important for tennis at all levels, from grand slams to local park sessions. A greater number of tennis venues than ever are at risk of regular and more severe flooding, while more extreme temperatures are increasingly impacting delivery of events, and the wellbeing of players who participate at them.

The LTA's Environmental Sustainability Plan is focused on securing a lasting future for tennis in Britain, using the power of tennis to change attitudes towards sustainability and bring about positive change.

The LTA Grass Court Season attracts thousands of fans every year, and it is vital that the events put as many measures as possible in place to reduce any potential harmful environmental impact. The LTA has introduced a number of steps to make their events more environmentally friendly, including:

- Using Hydrotreated Vegetable Oil (HVO) fuel to power temporary generators on-site, which results in 90% less emissions than standard fuels
- All tournament fleet vehicles used across LTA events are hybrid and nearly 50% are fully electric models, thanks to a partnership with Lexus
- Donating more than two tonnes of food to local food charities to reduce food waste
- Water refill stations for spectators, players and officials to fill their water bottles for free and remove over 220,000 single use plastic bottles, thanks to a partnership with BRITA



WOMEN AND GIRLS

On court and off court, tennis has set the agenda for women's sport and women and girls in sport for well over 100 years, creating a legacy whereby tennis is now often regarded as the most gender equal sport at both grassroots and elite level, and the benchmark many other sports are aiming for.

We believe that sport can be one of the most powerful platforms for promoting gender equality and empowering women and girls. However, in an era when we're now seeing women's sport in general increasingly getting a greater, but not yet fair, share of the headlines and coverage, more progress is still needed, including in tennis. That's why the LTA have set out our 'She Rallies' ambition for tennis to lead the way towards becoming a truly gender balanced sport, with a new push to build on tennis' pioneering legacy for women and girls in sport.

To read more about the ambition, [click here](#).

The launch of the She Rallies ambition marks a major step forward in delivering against the commitments we set out in our Inclusion Strategy for tennis in Britain and is fundamental to our plans to open tennis up to many more people.

Our focus will be on delivering long term, lasting change that truly makes a difference for women and girls in tennis where it is most needed. Underpinned by the necessary governance and support structures needed to make progress happen, the core of the work is concentrated around three pillars that together will help ensure tennis becomes even more relevant, accessible, welcoming and enjoyable for women and girls:

Participation: Targeted activity to drive increased participation in tennis among women and girls, with a focus on key age groups

Workforce: Provide the support and opportunities needed for more women to join the tennis workforce, and supporting the whole workforce to better understand and cater for female needs

Visibility: Inspiring women and girls through increased and better female representation, driving greater visibility of women's tennis reflective of its status as a leading women's sport



LTA TENNIS FOUNDATION

The LTA Tennis Foundation is the LTA's official charity - formed by the merging of the Tennis Foundation and The LTA Trust - that partners with people and organisations to fulfil its mission of improving lives through tennis. It shares the LTA's vision of 'tennis opened up' and aims to use tennis to make a real difference to people across Great Britain with a focus on underserved communities and under-represented groups.

The LTA Tennis Foundation's ambition is that every child, young person, and adult can have access to the unique and life-changing benefits that tennis offers.

The LTA Tennis Foundation will improve lives by:

- Enhancing physical health
- Promoting mental wellbeing
- Developing essential life skills
- Promoting social connection and building communities

The LTA Tennis Foundation will achieve this by:

Supporting organisations - Financially supporting and collaborating with charities and organisations embedded within their communities, who use tennis as a force for good.

Enabling communities and schools - Funding expertise and equipment to make tennis accessible to all.

Developing facilities - Improving access to tennis by developing, often neglected, facilities and courts.

Quotes about the impact of funding

"Thank you for making a difference in Felix's life. The inclusive tennis program has been an absolute game-changer for my son". Mum to Felix who attends sessions funded by the LTA Tennis Foundation.

"The grant from the LTA Tennis Foundation will prove transformational for so many lives in our local area. We want to make sure everybody has access to quality tennis provision, and healthy meals during school holidays" Founder, Playpoint Sports, funded by the LTA Tennis Foundation



PADEL

Padel is continuing to grow in popularity across Great Britain, with new figures collected and analysed by the LTA, revealing that participation more than trebled last year, alongside a major spike in public awareness and interest.

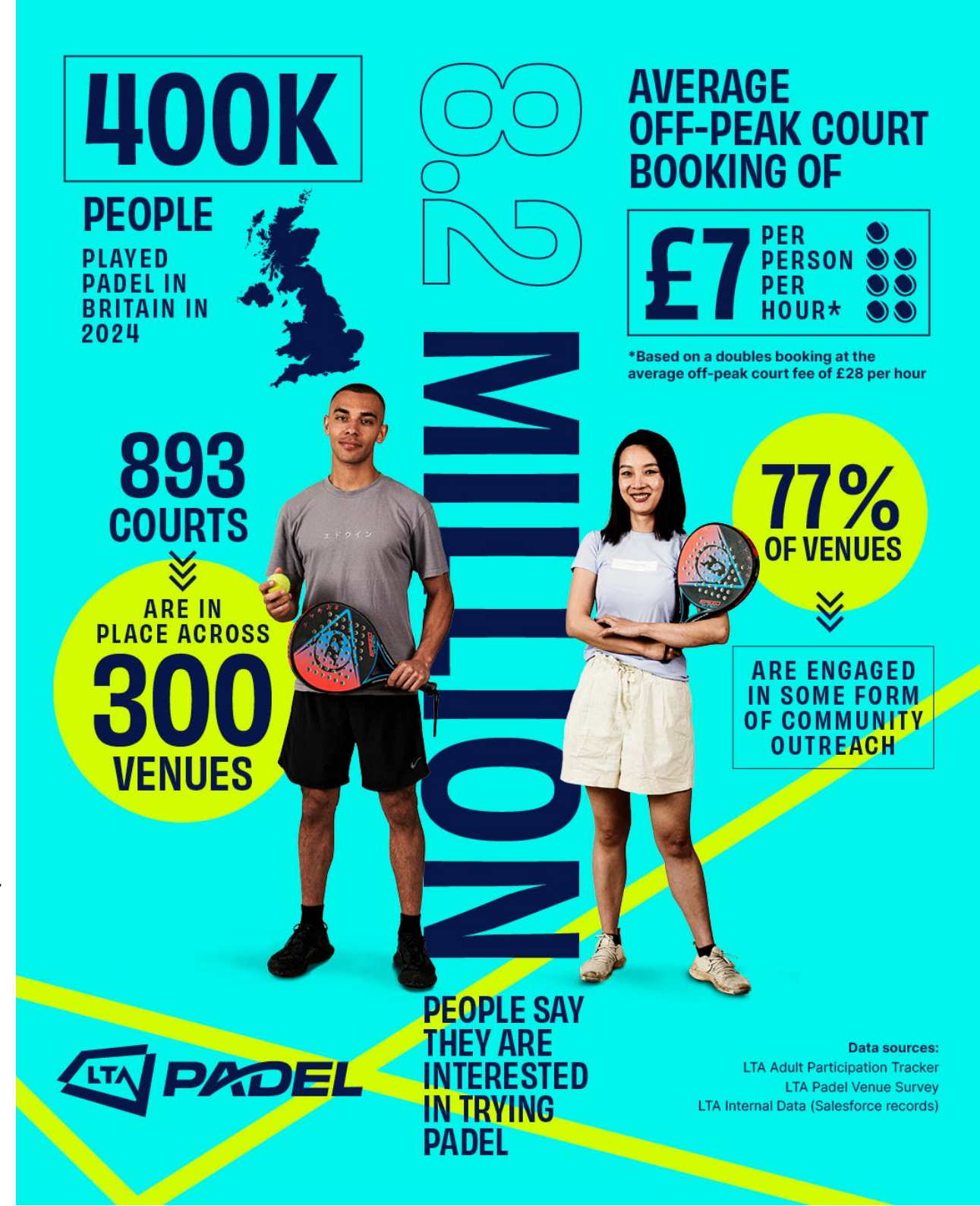
Padel is one of the fastest growing sports in Britain, with new figures released by the LTA showing that at the end of 2024, just over 400,000 adults and juniors in Great Britain played padel at least once in the preceding 12 months. Up from 15,000 in 2019, 89,000 in 2021, and 129,000 at the end of 2023.

This growth is supported by a rapidly expanding infrastructure, with 893 padel courts now available across 300 venues across Britain. As of February 2025, the LTA has invested more than £6 million in the growth of padel across Britain, including £4.5 million towards the development of 80 courts at 42 venues - representing approximately 10% of all padel courts nationwide.

Padel is playing an increasingly active role within our communities. The LTA is passionate about opening up padel to a more diverse audience, including those from underserved communities across the country, so everyone can enjoy the physical and mental benefits of staying active.

More than three-quarters of all padel venues are involved in some form of community outreach, from local school partnerships to free sessions and coaching for underserved groups. Research shows that an average off-peak court booking costs £7 per person per hour (based upon doubles.)

Awareness of padel among adults reached 43% of the population (approximately 23 million individuals) in the first quarter of 2025, representing a significant increase from 23% (12 million) during the same period in the previous year. Interest in playing padel across Britain continues to increase, with over eight million Britons expressing a desire to try padel, which is up by 60% over the past 12 months - reflecting its accessible, social nature and appeal to all age groups.



LTA SUPPORT

The LTA provides a range of kinds of support to British players to help them fulfil their potential, with the primary ones being:

Elite: For the highest performing players who are targeting major tournament success

NTC Pro Access: Providing cost-free access to the National Tennis Centre at Roehampton and the facilities there. This includes the hard, clay and grass courts, the specialist gym and strength and conditioning areas as well as other support on site, with players also eligible for the LTA's tournament bonus scheme

Pro-Scholarship Programme: The highest level of support offered to developing players aged between 16 and 24 with the best chance of reaching the ATP/WTA top 100 singles

Men's & Women's Programme: For the very best 16- to 21-year-old players in the country who are not currently on the Pro Scholarship Programme (the programme is also available to 14- and 15-year-olds in exceptional circumstances)

Elite Wheelchair: For our highest performing players who are achieving major tournament success and have the potential to consistently win Grand Slam titles and Paralympic medals.



LTA PERFORMANCE

Elite players and how we support them

Here is an overview of how player funding works:

What is the LTA Pro Scholarship Programme?

The Pro Scholarship Programme (PSP) is the highest level of support offered to developing players by the LTA. It is offered to players aged between 16 and 24 with the best chance of reaching the ATP/WTa top 100 singles within five years.

PSP players receive:

- Individually tailored support and world class coaching from the LTA Performance Team both at home and on Tour
- Access to a financial grant, intended to enable the player to employ uncompromised world-class coaching and dedicated personal strength and conditioning support
- Access to world class science and medicine support at the National Tennis Centre
- The PSP is the final stage of the LTA Player Pathway before players become eligible for our programme of elite support, offered to those who establish themselves in the ATP/WTa top 100 singles or top 30 doubles.

Elite players

Elite players are our highest performing players, who are targeting major tournament success.

Who's it for?

Singles players who reach the ATP / WTA top 100 and doubles players who reach the ATP / WTA top 32

Players demonstrating a commitment to maximising their potential and targeting major tournament success

What will this programme be like?

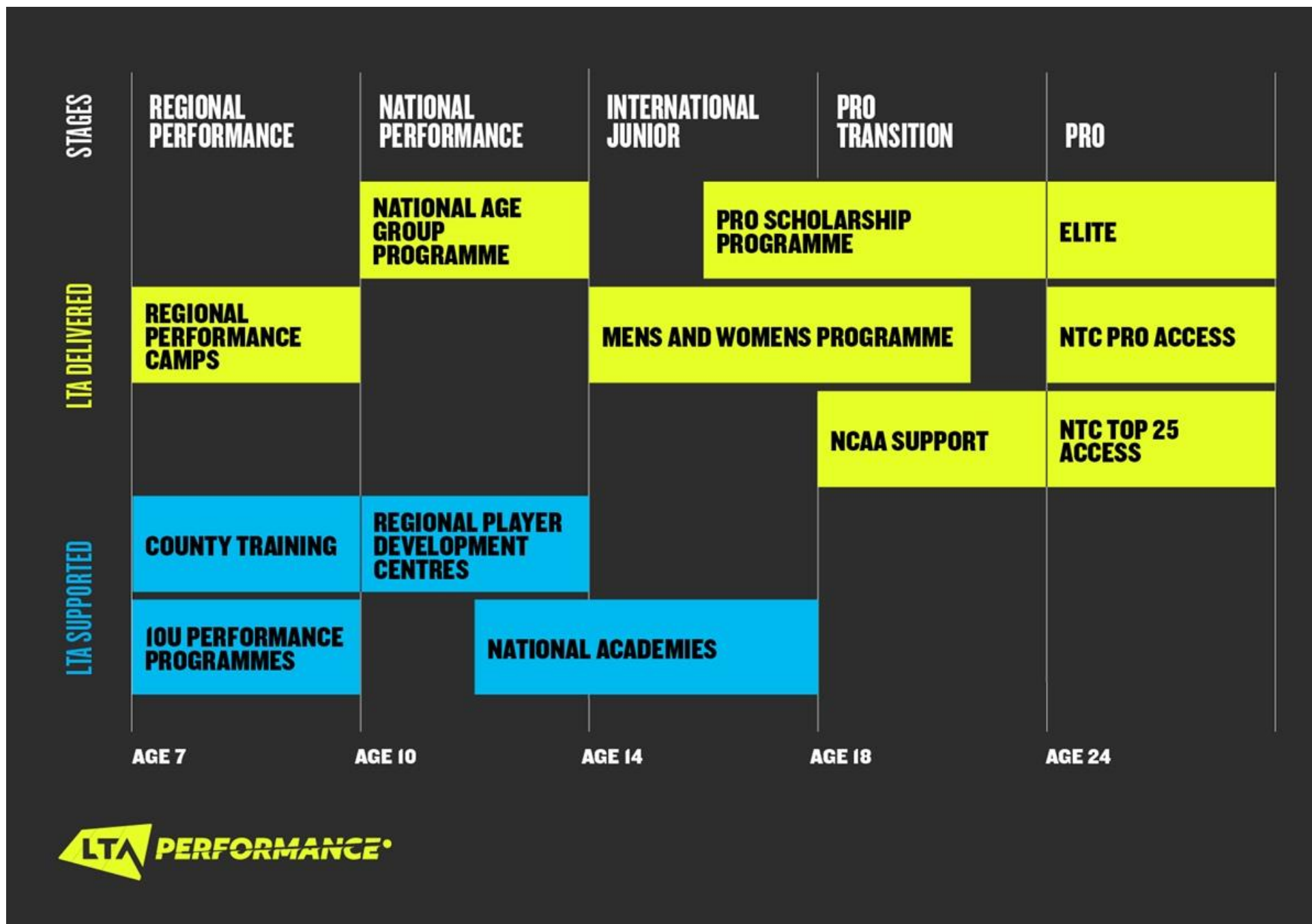
The LTA will facilitate and deliver science, medicine and wellbeing support at the National Tennis Centre and Grand Slams.

The player will be expected to participate in an annual review of support and interdisciplinary planning / review meetings as required.

The Science and Medicine support available may include:

- Medical assessments
- Physiotherapy treatment
- Nutrition assessment
- Performance analysis
- Strength & Conditioning
- Intensive rehabilitation
- Psychology and emotional well being
- Performance Lifestyle advice.
- Shared onsite physiotherapy, Strength & Conditioning and performance analysis support at Grand Slams will be made available.

LTA PERFORMANCE



LTA PARTNER FAMILY

Lead Partners



Official Partners



Official Supporters



OTHER USEFUL LTA LINKS

Inclusion and disability

<https://www.lta.org.uk/play/inclusion-disability/>

LTA Governance and Structure

<https://www.lta.org.uk/about-us/what-we-do/governance-and-structure/>

Our key national training facilities

National Tennis Centre

<https://www.lta.org.uk/about-us/national-tennis-centre/>

Lexus Nottingham Tennis Centre

<https://www.lta.org.uk/about-us/nottingham-tennis-centre/>