

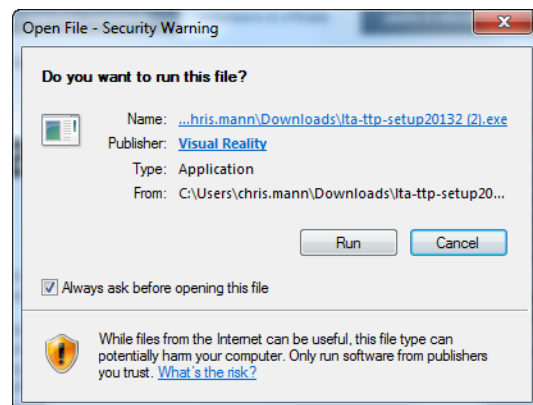
How to install Tennis Tournament Planner or League Planner

1. Ensure you have saved the licence sent to you by Competition Support to your computer. **Do not open the licence file.** Instead, right-click on the licence and save it to your computer, preferably in a folder that gets backed up. The licence file is what tells the software that you are an accredited user and allowed to have full use of the software.
2. Download TTP or LP from the LTA website.

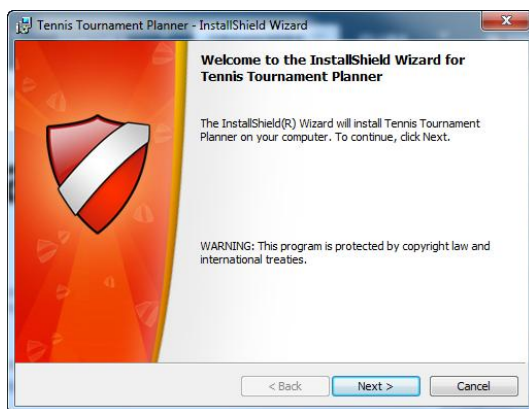
Follow the steps below (please note that this guide is written for TTP and LP however the images have been used from a TTP installation. The process is exactly the same)

Step 1 – Download TTP/LP from the LTA website.

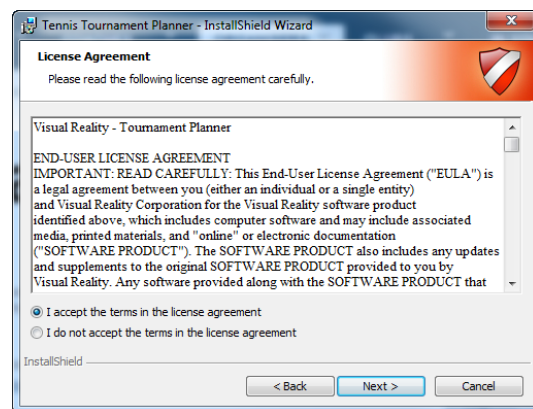
Step 2 – Click Run



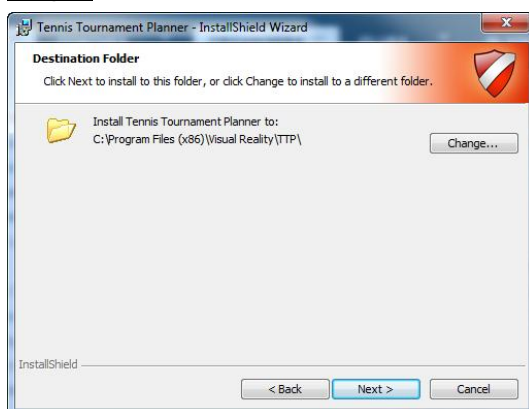
Step 3 – Click Next



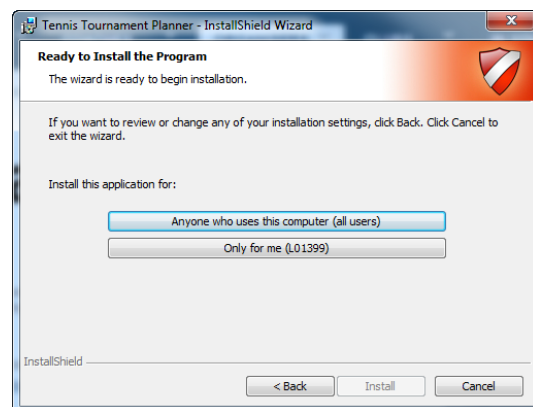
Step 4 – Accept the T&C's and click Next



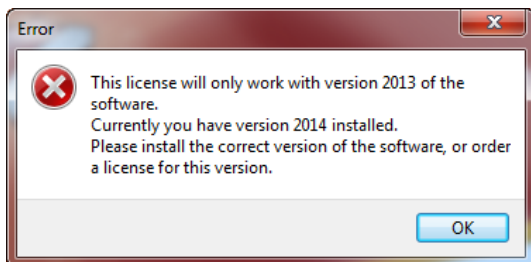
Step 5 - Click Next



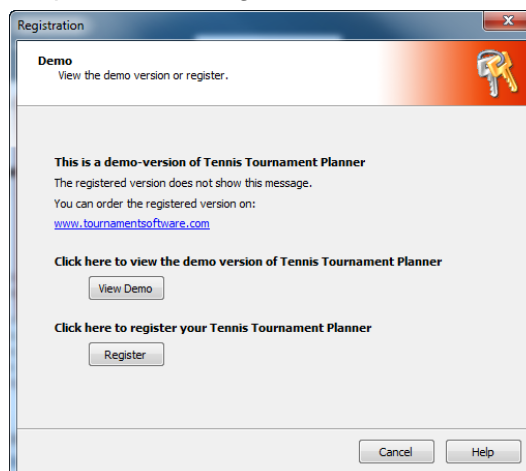
Step 6 – Click on Anyone who uses this Computer and allow to install



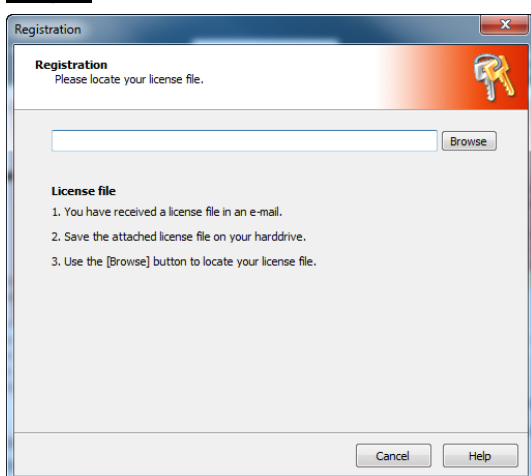
Step 7 – Once the installation is completed click Finish. Open the program and you will be prompted to register your licence. If you have had a version from a previous year you will receive the following error. Click Ok.



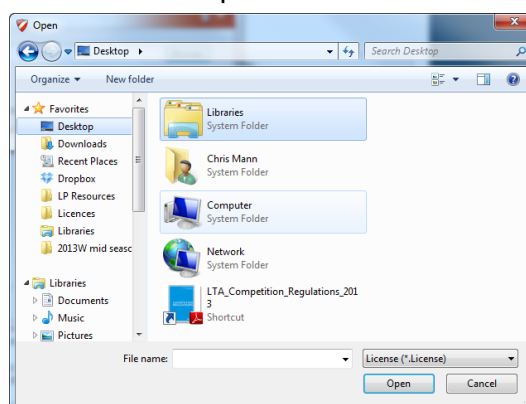
Step 8 – Click Register



Step 9 – Click Browse



Step 10 – Locate your licence, click on it once and then click Open



Step 11 – Click Ok and start using the new version

