



# PADEL NEWSLETTER

MAY 2023



# COACHING UPDATE

If a Padel coach is operating at an LTA Registered Venue (either as a standalone padel venue, or one attached to a registered tennis venue), they should be actively working towards gaining their LTA Accreditation.

At this moment in time, they are able to continue coaching without LTA Accreditation as long as they are considered safe to practice, which means they will need to have DBS, first aid and safeguarding training in place.

**If the padel coach already has a padel qualification from another body, they can apply for their non-LTA padel qualification to be recognised, to enable them to become LTA Accredited.**



## FROM JANUARY 2024

**The requirement for Padel coaches to be LTA Accredited will become enforceable from January 2024.** This means that if a Padel coach is not Accredited from that time onwards, they will not be allowed to coach at a registered venue.

The **LTA Padel Instructor** qualification is now being delivered by Coach Development Centres. This means that there will be a proliferation of courses across the UK and throughout the year.

For more information on padel coaching click [here](#)

# BRITISH PLAYERS ON TOUR

At time of writing Louie Harris and Sam Jones, GB Men 2 and 3, lost in the second round against the no 2 seeds in the FIP Rise competition in Gävle, north of Stockholm.

To follow their progress along with other top British players, visit their player profiles on the LTA website.

Links at [www.lta.org.uk/padel](http://www.lta.org.uk/padel)



# Britain's Tia Norton set to star in the first Pro Padel League

Tia Norton

British No.1 Tia Norton was selected to play for team Las Vegas Smash in the inaugural player draft for the 2023 Pro Padel League (PPL) in the USA.

Their first match is on May 13<sup>th</sup> against the Arkansas Matrix.

The PPL will see seven teams compete across one month in a series of events.

Read the full article [here](#).



**PRO  
PADEL  
LEAGUE**



# PERFORMANCE UPDATE

**Matt Stanforth, the LTA's new Padel Performance Manager tells us about his first three months in the role and his vision for the coming months.**

“The first three months have gone by incredibly quickly, and it has been great to visit a number of venues, meet members of the padel community, as well as LTA colleagues. I would like to say a big thank you to everyone I have met, for making me feel so welcome and for the support given and offered.

What has really struck me is the sense of community people have and how positive everyone is about padel. With more and more padel venues opening, I believe the opportunity from a performance perspective, as well as the sport as a whole, is huge and I am very excited about the journey ahead.



## **GB Men's and Women's Programme**

On 13<sup>th</sup> & 14<sup>th</sup> May, we will host a GB Men's & Women's selection camp at We Are Padel, Derby. Over 40 players have been invited to attend the weekend event which will include both on court and off court training (such as strength and condition training).

Following the camp, a squad of up to 12 men and 12 women will be selected to attend training camps across the remainder of the season. This will comprise of bi-monthly weekend camps, as well as training opportunities prior to the two confirmed FIP Rise events which will take place in August and November.

As well as the camps, players will be supported by national staff to develop individual development plans (IDP's) and will be able to access NTC courts and accommodation and the overseas training base we are developing at a reduced rate.

Continues on next page...



Matt Stanforth – continues:

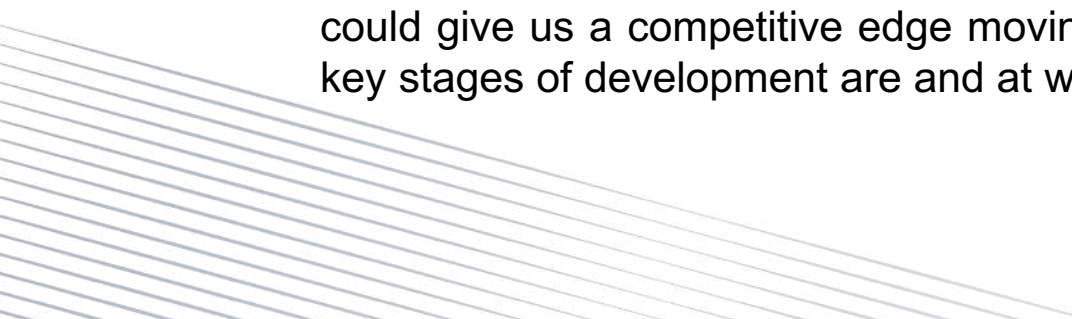
### **Overseas Training Base**

As part of our strategy to support our GB players to be competitive on the world stage, we are in the process of developing an overseas training base, linking in with some key academies in Alicante, Spain. This will allow our players to access coaching, training, and competition in the strongest padel nation in the world on a regular basis. This is an important element in developing the performance standards and culture we need to compete at the highest level. In creating an opportunity to demystify the opposition and the sport at this standard and match some of the best players in the world, we can then create the confidence and belief in our players and system to compete with the very best. This training base will be exclusively for players selected to the GB programme.

### **Next Steps**

Youth - Our next focus is on developing the youth section of the performance pathway. With padel being so new in the UK, the number of young players taking part is relatively low nationwide. However, it is also clear that youth activity is growing at different clubs around the country, and we hope this trend continues. Initially our approach may need to look at this from a participation perspective first, increasing the numbers of young people playing before looking at formalising National Age Group Squads and will provide updates on this in due course. In parallel with this, we are trying to identify coaches who are working with youth players across the country as we begin to look at potential training hubs that will be able to support young players on a daily basis.

Data & Insight – As we build our performance programme, we need to understand what performance padel really is and create ‘our way’ to identify, develop and support players to be contenders on the world stage. The decisions we make need to be based on data and insight which may reinforce what we already know as well as identify possible trends which could give us a competitive edge moving forward. This information allows us to then build an understanding of what the key stages of development are and at what ages, which then gives us a clear direction of travel moving forward.



# LTA PADEL BRITISH TOUR

## Brits claim victory across the board in Scotland

The competition at West of Scotland Padel, Stevenson was the third of seven Grade 1 events to take place across England, Scotland and the Channel Islands as part of the British Tour.

There was British success across the men's and women's competitions with Francis Langan and Jorge Martinez Del Campo lifting the men's title, and Aimee Gibson and Catherine Rose succeeding in the women's draw.

For our event summary, including draws and results go to the padel hub on the LTA website.



For more information on graded competitions and to view the 2023 calendar click [here](#).

# MOMENTUM BUILDING IN SCOTLAND...

Update from JJ Tait, Club Manager, Edinburgh Sports Club

You may remember that in 2022 Edinburgh Sports Club (ESC) completed a complex project to add more padel courts to its venue, due to huge demand from its growing padel community. How are they getting on since they added more courts?

JJ tells us 'Our courts are fully functional and are very, very busy, from 8am to 10pm, there is no off peak! Our membership has grown considerably since we were last in touch, and we receive a padel related enquiry every single day. Pay and play is also very popular and soaks up any spare capacity. Our location being very central in town is a key factor to high usage, but the main factor is, of course, the lack of courts in Edinburgh and Scotland as a whole. In the last year three new courts have opened in Edinburgh, two at Edinburgh Park, run by game4padel and one at a tennis club, Craigmillar Park Tennis Club. Edinburgh now has ten courts with one in Stirling and three in Ayrshire.

At ESC we run box leagues with over 40 pairs. Our club championships runs throughout spring and summer; it's age-graded and has over 150 players. We have social padel sessions for beginners and intermediates which fill up within minutes of the booking window opening, and our Spanish coach is working 30 hr weeks.'



Edinburgh social padel



Recent friendly match against Harrogate



# PADEL IN SCOTLAND... CONTINUED

Update from Carol Milligan, Game4Padel

**Game4Padel** started in Edinburgh, a city where they still have their headquarters and currently operate three venues:

- 1) **Thistle Padel Club** in Colinton, with two covered courts.
- 2) **Barnton Park** has one outdoor court.
- 3) **Edinburgh Park** opened its two covered courts in October 2022 and has seen a steady rise in court utilisation in its first six months of operation.

Due to open this summer, is Game4Padel's first venue in partnership with the R&A's new Golf It! brand with a 3-court canopied facility at Lethamhill in Glasgow.

This is an exciting community-focused development on the southern bank of Hogganfield Loch with many entertainment facilities and an outreach programme to take golf and padel into schools across Glasgow.

Other Scottish venues following soon after will include Forthill Community Sports Centre in Dundee (x1 court) and Ocean Terminal in Edinburgh (x1 covered court).

For more information visit [www.game4padel.com](http://www.game4padel.com)



# SENIORS PADEL

FIP Senior European Championships will be hosted by Spain, in Alicante (La Nucia) on June 12-17<sup>th</sup>, with a possible qualification the week before.



## Open Training Days

Over 35 women aged between 40 and 70 joined the Women's Open Training Day on 2nd April at We Are Padel, Derby.

The session was lead by women's coach Nigel Garton and GB Seniors Squad coaches Libby Fletcher, Jo Ward, Dawn Foxhall and Helen Crook.



# COACHING PADEL

The **LTA Padel Instructor** qualification is now being delivered by Coach Development Centres. This means that there will be a proliferation of courses across the UK and throughout the year.

The LTA Instructor qualification entails 4 days' core training, face to face with the Tutor plus one further five-hour Elective workshop, from a choice of two.

The electives, also available as CPD are as follows:

1. **Coaching the Double Glass**
2. **Coaching Kids' Padel**

For more information on padel coaching click [here](#)



Coaches wishing to prepare for the Padel Instructor qualification will need to do a **Padel Instructor Readiness Test**, which can be booked via the LTA Course Search Tool.

The test costs £36 and is carried out remotely/video based.

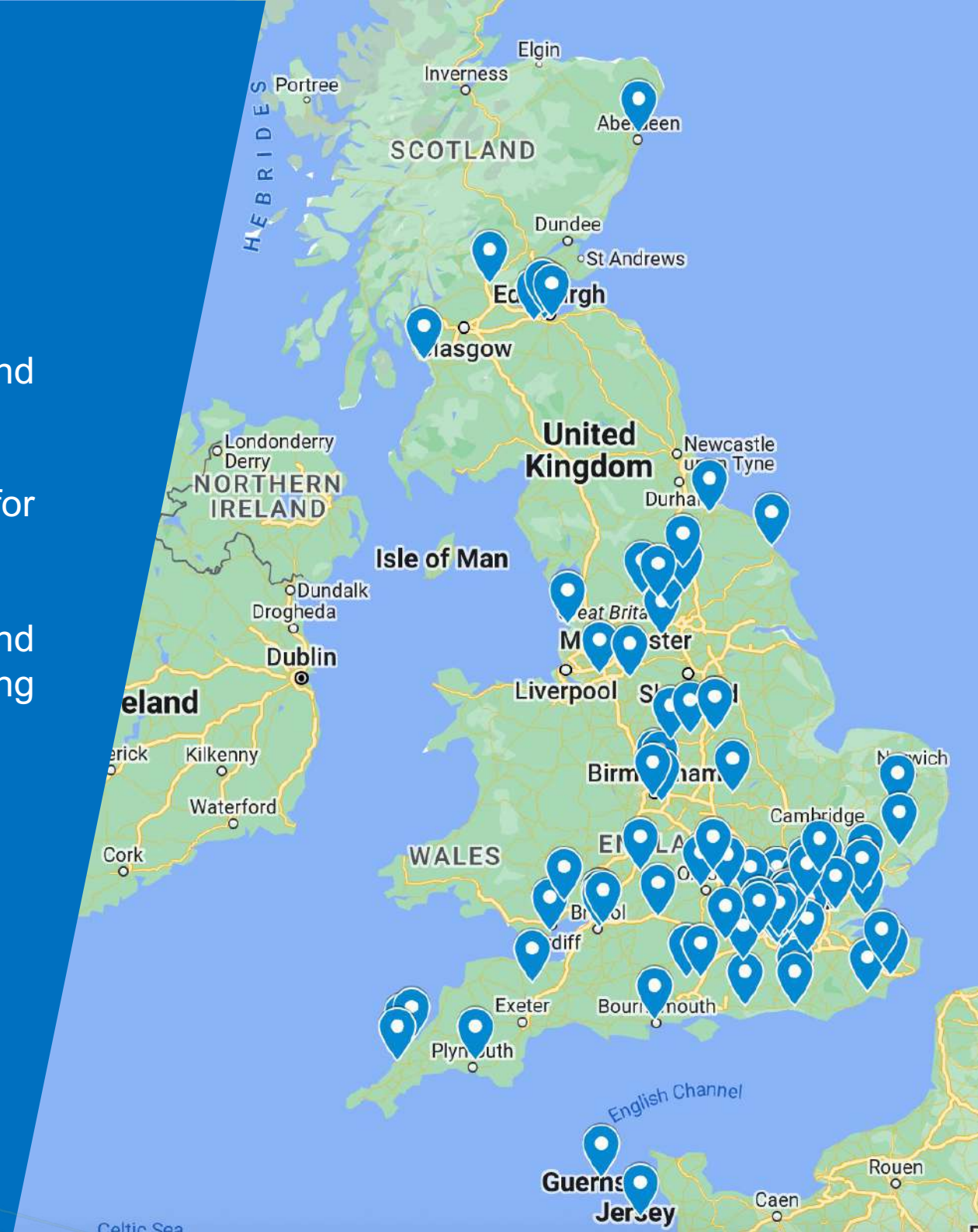
# PADEL COURTS IN BRITAIN

Get involved in one of the fastest growing sports in the world and book a padel court near you today.

There are now over 270 padel courts in Britain ready and waiting for you, with even more on the way.

Check out our padel court map [here](#) to find your nearest courts and how you can book your next hit with friends and family, a coaching session or play matches.

- ✓ **We Are Padel Bristol** have confirmed their grand opening on 13<sup>th</sup> and 14<sup>th</sup> May. Everyone is welcome to join them for free padel and coaching clinics on both days.
- ✓ **Padium** sets to open indoor venue in London's financial district, Canary Wharf mid-June.



# QUICK ACCESS LOAN SCHEME - PADEL

LTA's Quick Access Loan Scheme provides interest-free loans to help venues invest in facilities, including the installation of padel courts.

For further information please see the following link to the [Quick Access Loan Scheme \(lta.org.uk\)](https://lta.org.uk/quick-access-loan-scheme)



## PROJECT DEVELOPMENT

The QAL funding framework is as follows-

Scheme	LTA TF investment level	Borrowing term
Outdoor padel Approx. cost per court - £75k	Up to 60% of the project cost	5-7 year repayment period
Covered padel (court and cover) Cost per court - £180k	Up to 60% of the project cost	5-10 year repayment period

If you are looking to develop padel at your venue, or you have any questions please contact [facilityfunding@lta.org.uk](mailto:facilityfunding@lta.org.uk)

On 15<sup>th</sup> June we will be running two webinars; 2pm and 7pm, to introduce and outline the Quick Access Loan scheme and answer any question you may have. If you would like to register for the webinar please see the following [zoom link](#).

# PADEL EXPERIENCE AT THE NTC

## *Experience Padel at the National Tennis Centre!*

This package includes 4-hours of on-court coaching, a tour around Wimbledon, a meal at a local restaurant serving authentic Spanish cuisine and an overnight stay at the NTC.

### **Need more information?**

Email: [ntc.padel@lta.org.uk](mailto:ntc.padel@lta.org.uk)

Tel: 0208 487 7296



For those venues considering padel, the NTC can offer personalised group sessions.

There's also regular sessions for anyone wanting to try padel. Players can also book the padel courts on a pay-and-play basis.

Find out more details [here](#)



# LTA WEBSITE

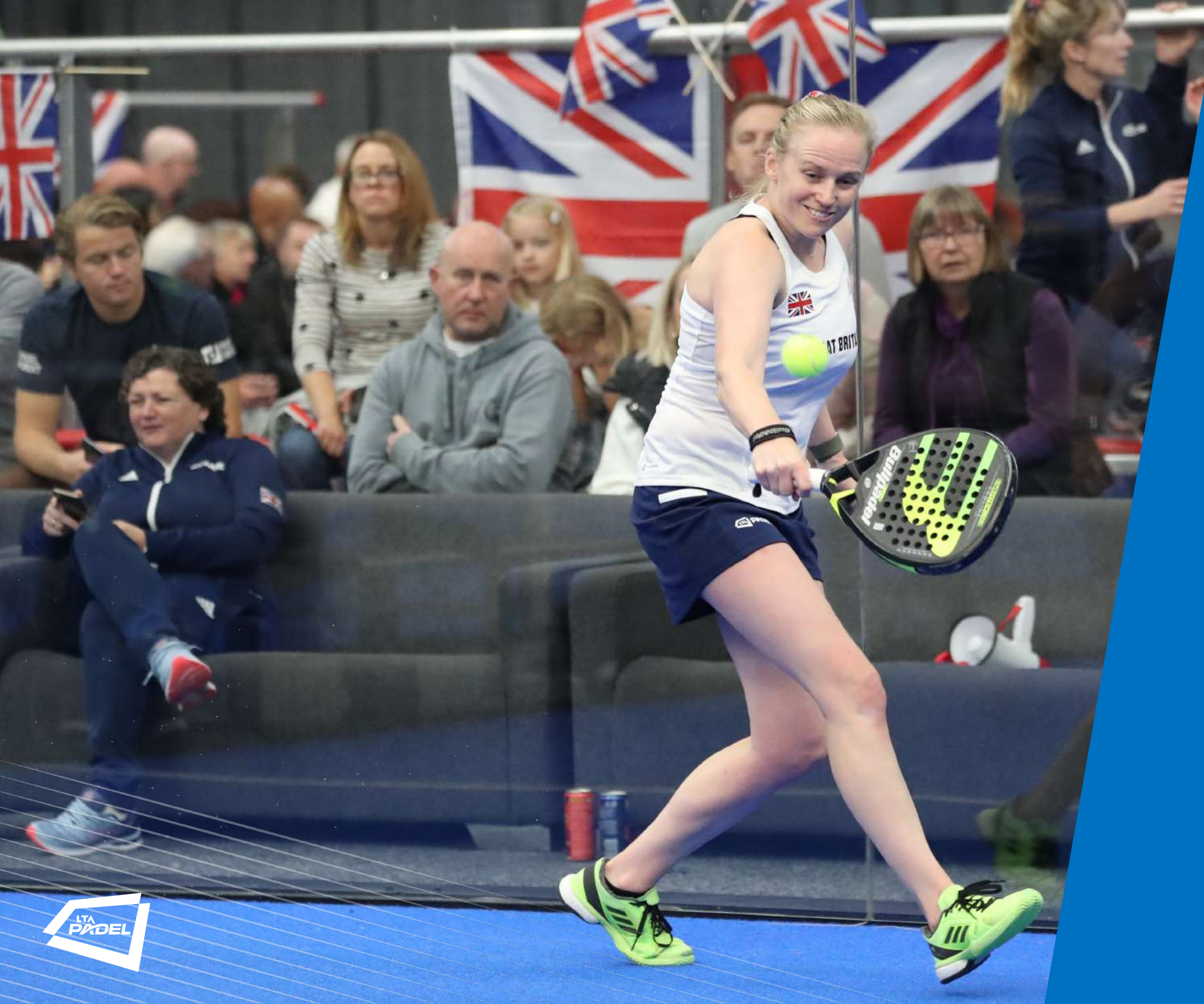
Explore padel through our online hub and find out how you can start playing

- Find a padel court
- Latest news articles
- Padel competitions & rankings
- Coaching courses
- FAQs



[www.lta.org.uk/padel](http://www.lta.org.uk/padel)





# PADEL NEWSLETTER

All content is prepared by the  
Development Tennis Advisory  
Group (DTAG)

If you feel your venue should be featured within the newsletter, or if you have any padel news, please contact Katherine by [email](#).

For general advice and or support on padel, please contact your local LTA representative.